

Lisa Pavelka 2015 Proposal 1 & 2

Basic Tools and supplies for all classes:

The usual: clay dedicated pasta machine, two "F" or "C" clamps are highly recommended for added stability when cranking your heart (and clay) out, clay blade, X-acto type craft knife, smooth ceramic tile (it doesn't have to be gargantuan, 8" x 8" or larger are fine), needle tool, deli/parchment paper, and baby wipes. Optional, extra clay (FIMO Soft or Pro are recommended).

1. I'll Puff and Puff and Puff Your Heart Out



We'll have fun making hollow heart forms and donuts using canes and perhaps another cool surface technique if time permits. Lisa will share how to create a layered effect for jellyroll canes. Tips for using scrap clay for striped edging, plus hidden suspension method and finishing concepts will also be covered.

What Lisa's bringing for you: a few canes of her own

What else you gotta bring? (in addition to the basic supply list feel free to bring your own, uncured millefiori canes, (Lisa will bring some of

her own you can get some slices from).

2. Batik It Baby!



Get the look of Batik fabric but on clay! This class will cover three separate techniques that come together to create this cool effect. Each technique can be used independently on it's own (how great is that?). Clay striping tips will be demonstrated and handouts for that and the techniques will be provided.

What Lisa is bringing for you: clay in a limited color palette which may differ from the sample shown) textures to borrow, something fun to cover (it's a mystery), ink, gloves to keep your mitts clean, adhesive, and some other fun stuff.

What you need to bring: nothing unless you want to bring your own flat-topped, bake-able coverable (no bigger than 3" x 4" inches please) and your favorite colors of clay if you want more to choose from (FIMO Soft or Pro are highly recommended).

Lisa Pavelka 2015 Proposal 3 & 4

Basic Tools and supplies for all classes:

The usual: clay dedicated pasta machine, two "F" or "C" clamps are highly recommended for added stability when cranking your heart (and clay) out, clay blade, X-acto type craft knife, smooth ceramic tile (it doesn't have to be gargantuan, 8" x 8" or larger are fine), needle tool, deli/parchment paper, and baby wipes. Optional, extra clay (FIMO Soft or Pro are recommended).

3. 3D Illusions in Clay



Create clay effects that make your work look like an optical illusion with dimensional texture. You'll learn varied effects using gradient sheets and scraps along with tips on making better Skinner Blends. Students will create a finished coverable piece to take home.

What Lisa is bringing for you: clay in a limited color palette which may differ from the sample shown), textures, something fun to cover (It's a mystery!), adhesive, and some other fun stuff.

What you need to bring other than the basic supply list? Nada baby! (Unless you want to bring other colors of clay - FIMO Soft or Pro are recommended, and your own flat-topped

coverable, that's safe to bake if you like (no bigger than 3" x 4" inches please)

4. Playing with Pinwheels



It moves...it groves! Learn how to create kinetic, wind-driven pinwheel components for making playful jewelry. Screw Post construction will be demonstrated and participants will learn design ideas. You'll be making a Spinner Ring. You know what they say (or at least I say), "If it's a spinner, it's a winner!" Helpful tips and instructional handouts will be provided.

What Lisa's going to bring for you: polymer clay (in a limited color palette, so bring more if you like, FIMO Soft or Pro are recommended) a ring setting, template, adhesive, optional accent crystals, and screw posts. (Pssst: There'll be

bonus surprises too, but that's our secret!)

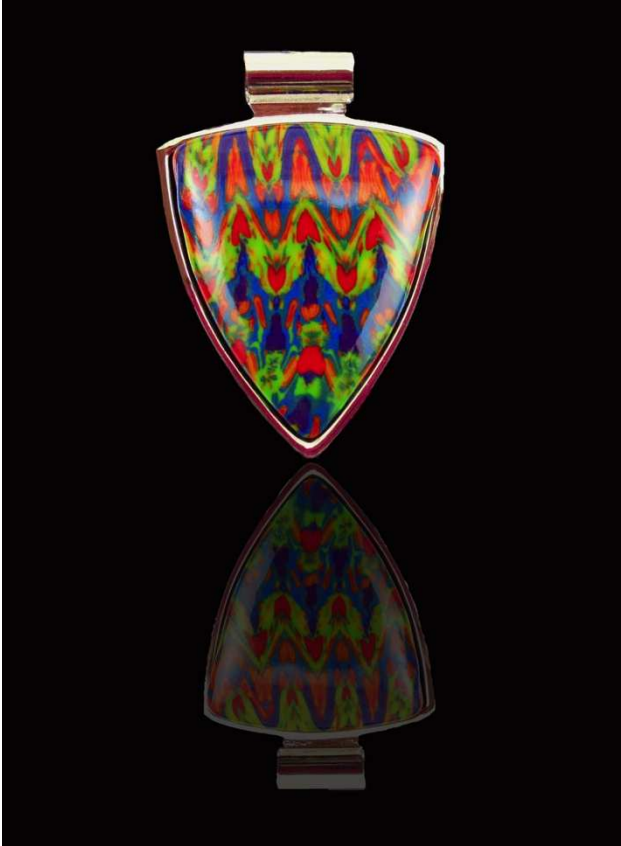
What do you need bring: In addition to the basic supply list, how about nothing (unless you want to bring more clay colors, FIMO Soft or Pro are recommended)!

Lisa Pavelka 2015 Proposal 5

Basic Tools and supplies for all classes:

The usual: clay dedicated pasta machine, two "F" or "C" clamps are highly recommended for added stability when cranking your heart (and clay) out, clay blade, X-acto type craft knife, smooth ceramic tile (it doesn't have to be gargantuan, 8" x 8" or larger are fine), needle tool, deli/parchment paper, and baby wipes. Optional, extra clay (FIMO Soft or Pro are recommended).

5. Scrap-O-Rific!



You probably have tons scrap clay; cane ends and the like...way more than you might need for armature, backing and bead gut. What else cool can you do with it? There are techniques like my Faux Tortoise Shell and Scrap Cane method that appear in some of my books. Then there's Alice Stroppel and her amazing "Stroppel Cane", but how about adding another fab technique to your repertoire? You'll also learn how to make custom scrap, when you don't have what you need or colors that strike your fancy. How to set it into a cool bezel? Tips and tricks for that will be covered too!

What Lisa's bringing for you: Clay in a limited color palette, adhesive, a bezel of course, and some other great stuff just for fun!

What you need to bring: In addition to the basic supply list, how about nothing (unless you want to bring more clay colors, FIMO Soft or Pro are

recommended)!